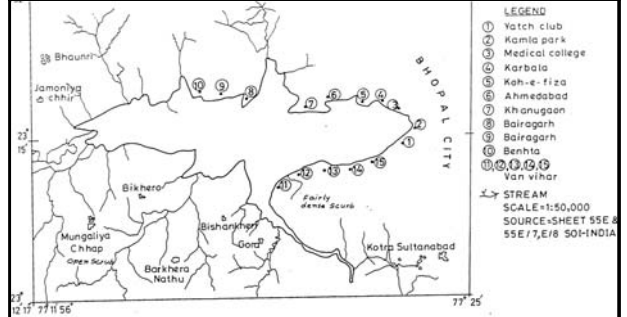


Pollution in Upper Lake, Bhopal : Using Remote Sensing, GPS and GIS



Dr.Nitin Kumar Tripathi
Pradeep Singh C.M.S

Map of the Upper Lake Bhopal



Aquatic Weeds near Benhta



Floating Algae and Macrophytes



Erosion from weathered
rocks

Aquatic Vegetation Bloom at Bairagarh



Lake Water near Van Vihar



Outfall near VanVihar



Aquatic Farming in Bhopal Lake



Sampling and GPS observations



Outfall Near Koh-e-fiza



Dense Macrophytes at Dargah



Object of the study

- to propose an approach for mapping pollution in surface water streams using Geoinformatics.

UPPER LAKE BHOPAL



Lake Pollution Effects

- Siltation
- Eutrophication
- Toxic wastes from fertilizers and industries
- Potability of water reduces

Causes

- Point sources
 - Outfalls of sewer drains,
 - Storm drains
 - Hospital and Industrial drains
- Non-Point Sources
 - Agricultural fields
 - Forest areas

Methodology

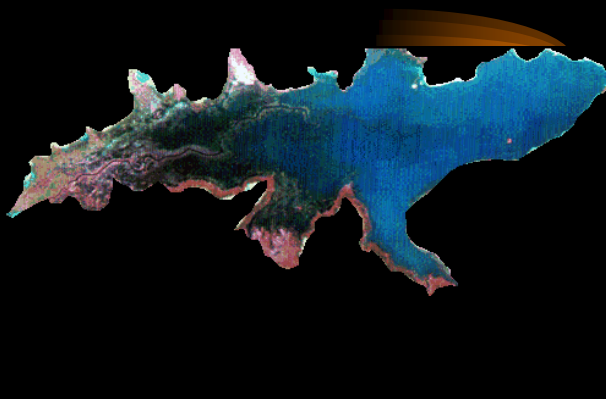
- GPS Data Processing
 - Transforming GPS Coordinates to Map coordinate system,
 - Apply corrections to GPS coordinates
 - Overlay GPS points on satellite data
- Retrieval of spectral reflectance values
 - IRS -1B / 1C consists of five spectral bands
 - Collect reflectance values
 - Find correlation of reflectance each bands separately with pollution parameters.

- Select suitable band
 - based on coefficient of correlation
 - for each parameter
- Develop a regression model
 - Spectral reflectance vs SSC
 - Spectral reflectance vs SD
 - Spectral reflectance vs Ch-a

- Verify the model
 - based on Chi-square test
- Develop maps of following using map calculation module in GIS adopting the selected band
 - SSC
 - SD
 - Ch-a

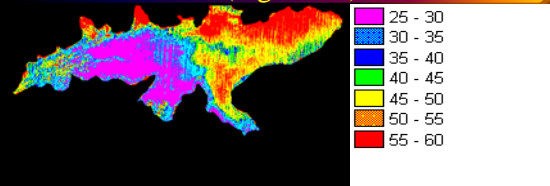
- Reclassify each map in selected classes
- Give weightage to each class in each map
- Overlay and sum all three maps
- Reclassify the sum map
- Create a map of total pollution of the LAKE
- Check the results with limited field checks

FCC OF LAKE

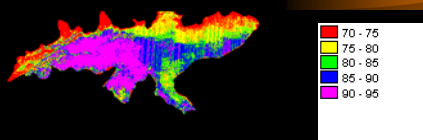


Chlorophyll -a Map of Bhopal Lake

(mg / cum)

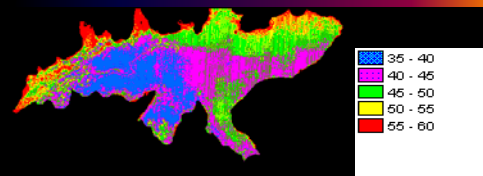


Secchi Depth of Bhopal Lake (cm)

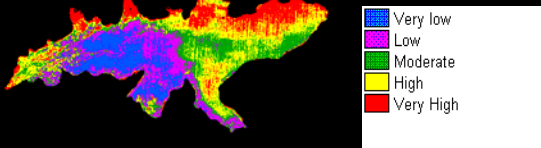


Suspended Solid Concentration in Bhopal Lake

(mg / l)



Pollution Zones after GIS Analysis



MACROPHYTE GROWTH IN LAKE

